

# ONE

You shoot

# TWO

You scan

pspix



# ONE

You shoot



- pspix Imaging Plates are thin and flexible enough to enable easy and precise positioning for greater patient comfort.
- Optimum use of the active area of the Imaging Plates.
- Easy to handle for the user thanks to its wireless nature.

pspix is designed to make intra-oral imaging in the

- Easy to use and fast to operate: readout time of 4.3 to 7.5 sec.
- A constant image quality.

# TWO

You scan

- Ease your workflow, **pspix** is 100% automated.
- The Imaging Plate is read and erased simultaneously.



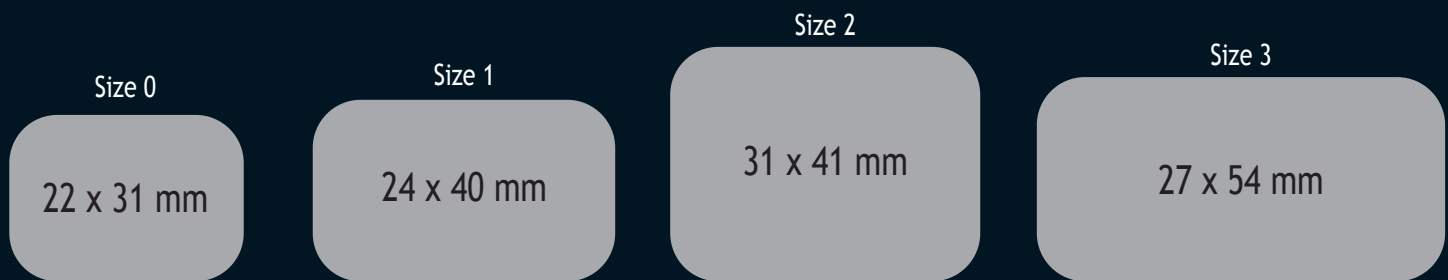
dental office easier and more efficient.

- Smart design, ergonomic and compact.
- Perfect for multi-op or single-op practices.

# Efficient workflow

All the advantages of conventional films.

- Thin and flexible Imaging Plates are easily positioned in the mouth.
- Imaging Plates surface is 100% usable.
- Imaging Plates have great latitude and save over-manipulations of the generator.
- Ecological, the Imaging Plates are reusable and require no chemical products.



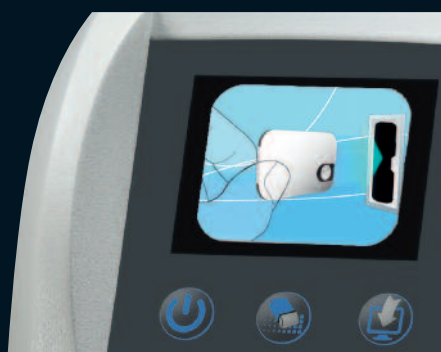
The

- The system reads and erases the Imaging Plates so that they are immediately reusable.
- pspix is compatible with all kinds of intra-oral AC or DC generators.



## All the advantages of digital technology

- pspix is delivered with four different sizes of Imaging Plates for your various needs.
  - The technology of the Imaging Plates offers digital-quality shooting.
  - Wireless, the Imaging Plates are easy to use.
- A screen allows you to control the different steps of the process as well as displaying the images taken.



Waiting for the Imaging Plate



Scanning

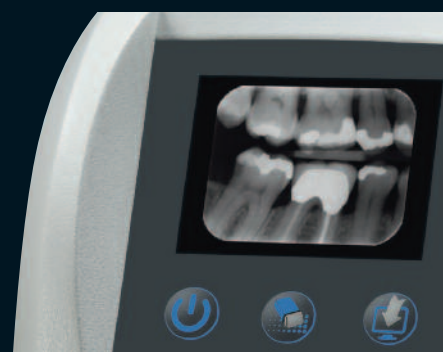


Image displayed



# Easy to use

All the advantages of an automatic film processor.

- Auto-access: motion sensors trigger automatic opening of entry slot.
- Auto-detect: **pspIX** automatic recognition of inserted plate size.
- Auto-scan: automatic readout after insertion of the Imaging Plate.
- Auto-erase: the Imaging Plate is automatically erased after scanning.
- Auto-eject: the Imaging Plate is automatically ejected in its collector for immediate reuse.
- Auto-optimization: **pspIX** adjusts the brightness and contrast of the image automatically; image quality is always optimized.
- Auto-sleep: **pspIX** automatically switches to the energy-saving mode when it is not used for a certain period of time.



## The

- Automatic development process.
- Preview screen.
- Attractive and compact design.



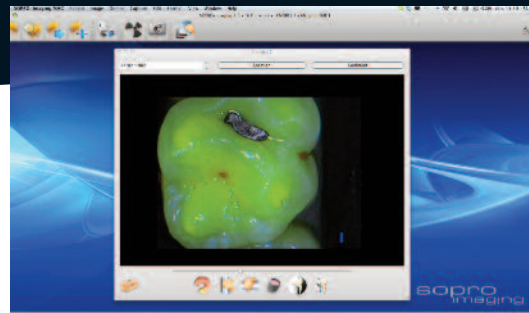
# sopro imaging

All the advantages of proven software.

Already acclaimed by thousands of users for its easy of use, **sopro imaging** has further improvements with new design and new ergonomics.

The

- More Intuitive
- Evolutionary
- Windows® and Mac® compatible
- Compatible with Management software
- Ergonomic



All the advantages of being networked.

**pspix** can be used in single or multi-op. It offers a user-friendly and economical solution to practices with several dentists.



\* Capture from your PSPix system under Windows®, visualize and edit instantaneously your images under Mac® with Sopro Imaging for MAC®.



## Specifications

### System

Readout time: . . . . . 4.3 - 7.5 secondes  
Theoretical resolution: . . . . . 14.3lp/mm  
Interface: . . . . . Ethernet RJ-45  
Dimensions in mm: . . . . . H: 203 x W: 246 x D: 411  
Weight: . . . . . 9.5kg  
Operating voltage: . . . . . 100 - 240V, 50/60Hz

### Minimum configuration required for pspix

Operating system . . . . . Windows XP Pro SP3  
Processor . . . . . Intel® Pentium III - 500 Mhz  
Video board . . . . . 128 Mb RAM  
Memory . . . . . 512 Mb  
Hard disk . . . . . 250 Gb  
Screen resolution . . . . . 1024 x 768  
Ethernet board . . . . . 100 Mb-1Gb/s

### Configuration recommended for pspix

Operating system . . . . . Windows 7 SP1  
Processor . . . . . Intel® Core 2  
Video board . . . . . 512 Mb RAM  
Memory . . . . . 2 Gb  
Hard disk . . . . . 320 Gb or more  
Screen resolution . . . . . 1280 x 1024 or more  
Ethernet board . . . . . 1 Gb/s

### Imaging plate Size 0

Dimensions: . . . . . 22 x 31 mm  
Image size (pixels): . . . . . 628 x 885 pixels  
Image size: . . . . . 1085 kB

### Imaging plate Size 1

Dimensions: . . . . . 24 x 40 mm  
Image size (pixels): . . . . . 685 x 1143 pixels  
Image size: . . . . . 1529 kB

### Imaging plate Size 2

Dimensions: . . . . . 31 x 41 mm  
Image size (pixels): . . . . . 886 x 1171 pixels  
Image size: . . . . . 2026 kB

### Imaging plate Size 3

Dimensions: . . . . . 27 x 54 mm  
Image size (pixels): . . . . . 771 x 1542 pixels  
Image size: . . . . . 2322 kB

Discover the Acteon Imaging universe on [www.acteongroup.com](http://www.acteongroup.com)

Digital radiology



Intra oral camera



Caries detection system

